

PROCEDURES and PRINCIPLES **for** **SUCCESSFUL SWITCHING**

*“Understanding and Enacting the New
MHSAA “Opposite Table” Mechanic”*

PRINCIPLES:

For each system, remember . . .

3-Person:

- > Reporting official goes opposite table; opposite table replaces reporting official.
- > Exceptions: When reporting official is already opposite table no switch occurs. "Long Report."

2-Person:

- > Officials switch after fouls.
- > Reporting official goes or remains opposite table after fouls resulting in free throw(s).
- > Exceptions: No "long switches"

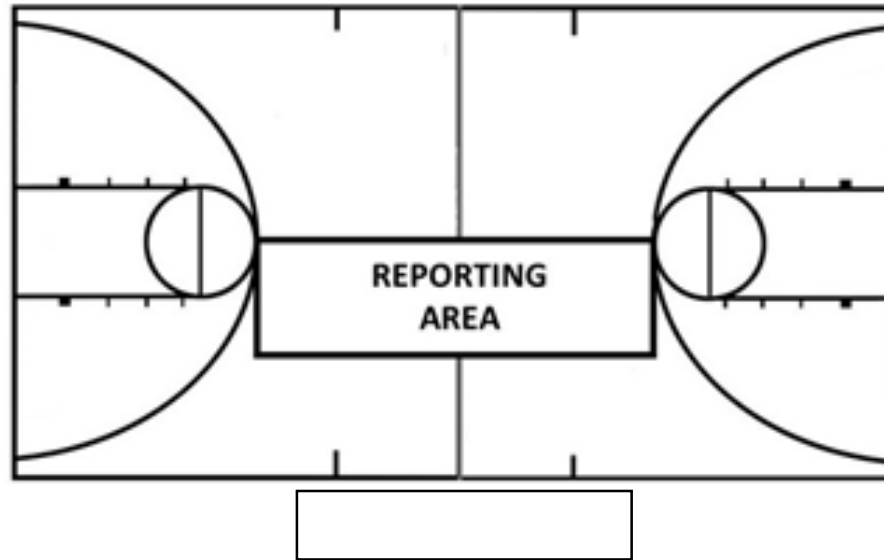
PROCEDURES:

A. Signal the designated spot or number of free throws prior to leaving the site of the foul



PROCEDURES:

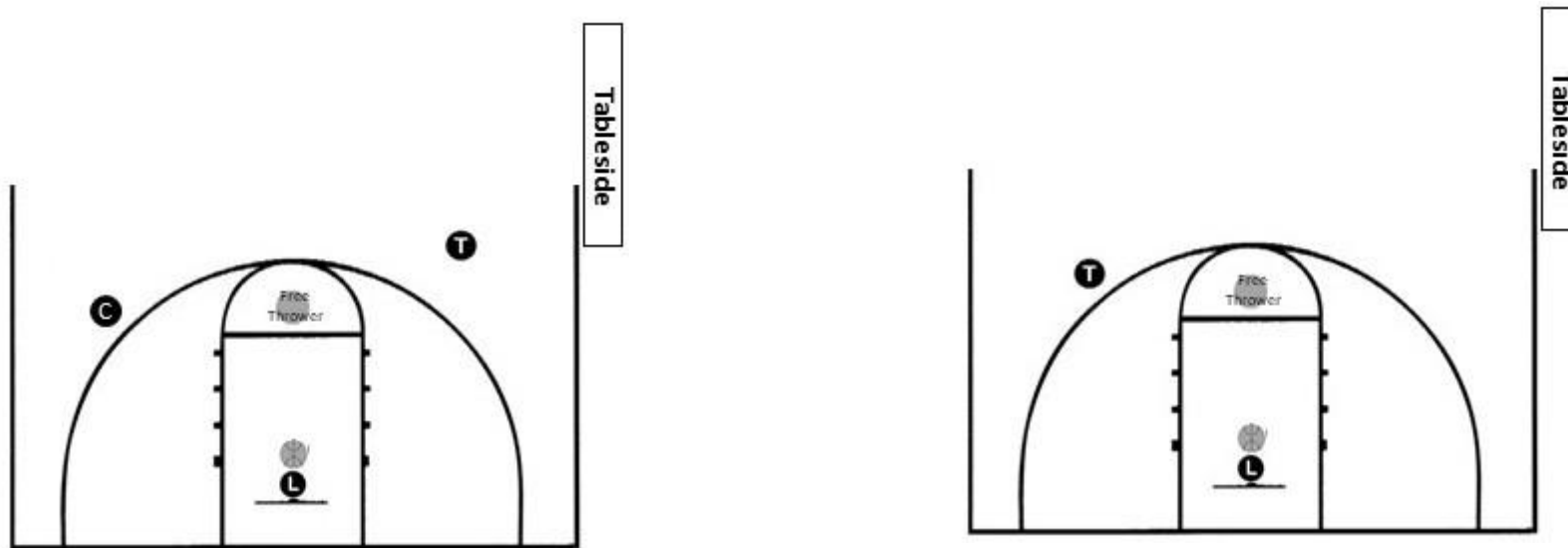
B. Get to a location in the Reporting Area and give an unobstructed report to the table, verbalizing loudly enough to be heard by the scorer. Choose a location in the reporting area convenient and on the way to where you'll be going after the report. There's no need to go too far and get real close to the table



“The four corners designating the reporting area are the top point of each free throw circle and points toward the scorer’s table half-way to the sideline.” – MHSAA Officials’ Manual

PROCEDURES:

C. Arrive at the approved location for the next play, either free throw (illustrated below) or throw-in.



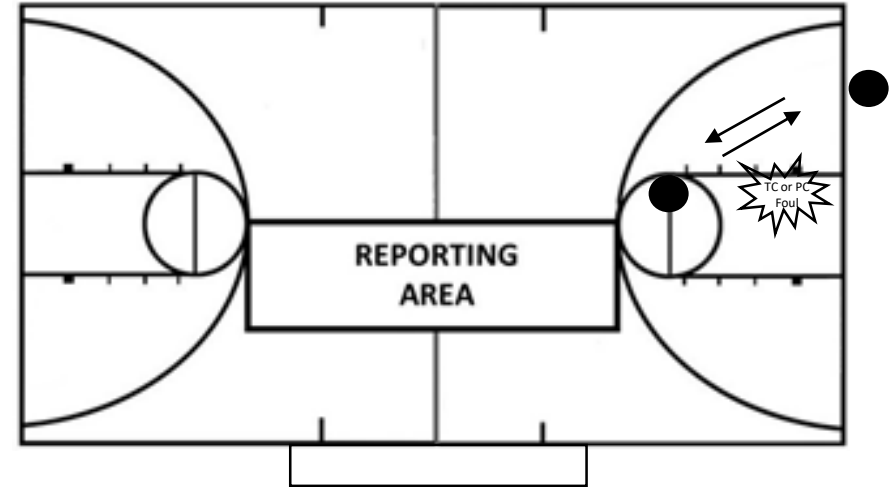
“... a step above the free throw line extended and halfway between the free throw lane and the sideline farther from the bench. This position places the Center (Trail in 2-Person) official just above and very near the three-point arc.” – MHSAA Officials’ Manual

EXCEPTION (3-Person “Long Report”):

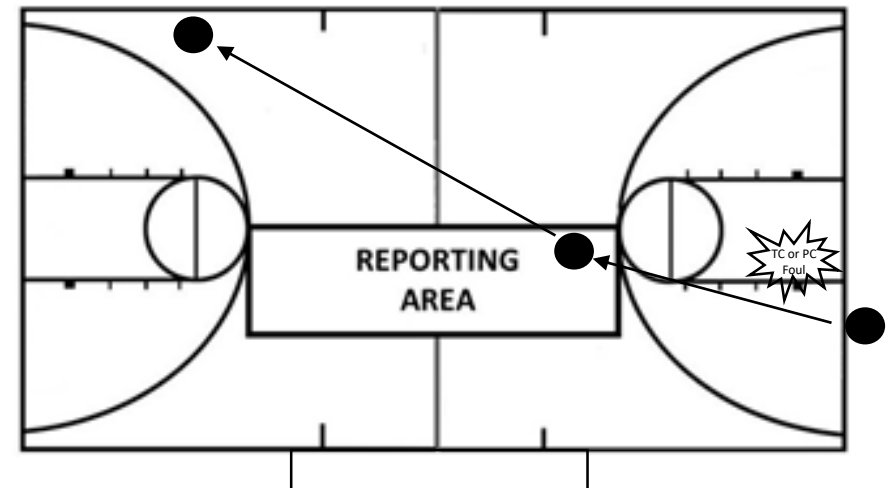
“Long Report, No Long Switch”: If a team control foul is ruled by the Lead in the front court and the subsequent throw-in will be administered on the endline opposite the table, he may do a “long report” by pausing briefly after the foul, stepping to a convenient location near the free throw line (allow the players to clear), report to the scorer from there, then return to administer the resulting endline throw-in opposite table as the new Trail.

If a team control foul is ruled by the Lead in the front court and the subsequent throw-in will be administered on the endline nearer the table, partners will execute a **standard dead-ball switch** with the reporting official going opposite table. The ruling official reports the foul from within the reporting area, then moves to the Center position opposite the table. The official opposite the table replaces the calling official as new trail and administers the throw-in.

“Long Report”



“Standard Switch”

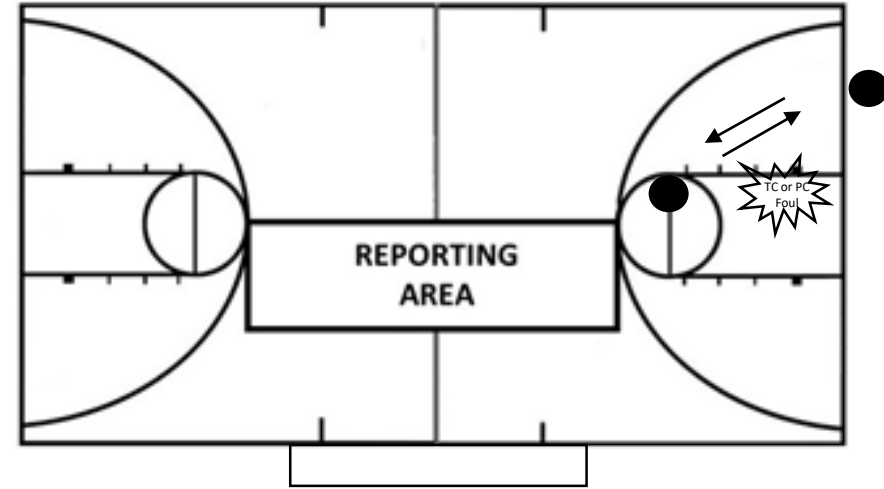


EXCEPTIONS (2-Person “Long Report”):

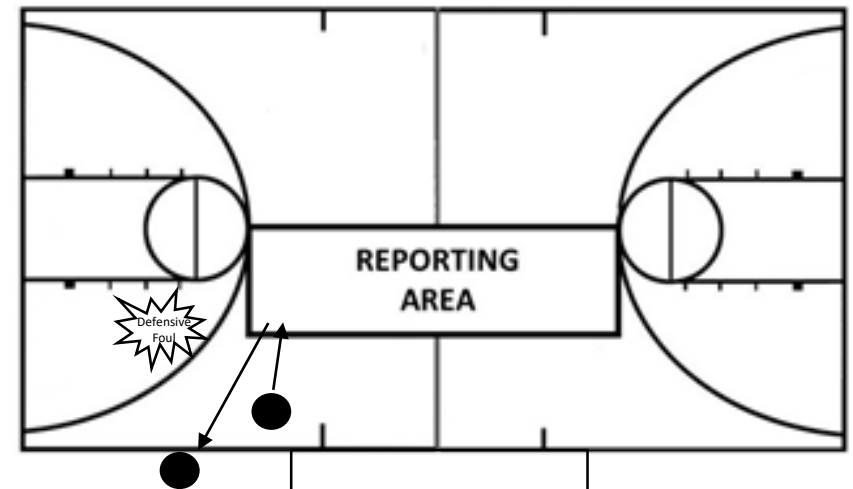
“Long Report, No Long Switch”: If a team control foul is ruled by the Lead in the front court and the subsequent throw-in will be administered on the endline, he may do a “long report” by pausing briefly after the foul, stepping to a convenient location near the free throw line (allow the players to clear), report to the scorer from there, then return to administer the resulting endline throw-in opposite table as the new Trail.

“No Long Switch”: When the Trail official in either the frontcourt or the backcourt rules a defensive foul not resulting in free throws, he reports the foul from the reporting area and then returns to the Trail position.

“Long Report”



“Standard Switch”



SIGNIFICANT CONSIDERATIONS:

- > Designate the location of the spot throw-in or the number of free throws prior to leaving the site of the ruling.
- > Move around, not through, players on way to reporting area.
- > Choose a location in the reporting area convenient to where you intend to end up after the report.
- > Allow the players to clear before signaling or go to a location in the reporting area where line of sight to scorer is unobstructed.
- > Vocalize loud enough for scorer to hear given the farther distance from which you may be reporting.

Excerpts from the MHSAA Officials' Manual:

2-PERSON SWITCHING AFTER FOULS:

A. General Provisions:

1. When a foul results in one or more free throws, after reporting the foul from within the reporting area, the ruling official will go **opposite table** to be the Trail official.
2. The four corners designating the reporting area are the top point of each free throw circle and points toward the scorer's table half-way to the sideline.
3. If the non-ruling official is the Trail, he replaces the ruling official, moving to the Lead position tableside to administer the free throw(s).
4. If the ruling official is the Trail on tableside, that official must move to the Trail position opposite table for the free throws and the Lead administers the free throw(s) from a tableside position.
5. The non-calling official should assist with identifying the free throw shooter as the ruling official is moving to the reporting area.
6. For detail of the mechanic following fouls not resulting in one or more free throws, see "Fouls, Dead Ball Switching".

E. Dead Ball Switching:

1. After fouls resulting in free throws, the ruling official reports the foul from the reporting area and becomes or remains the Trail official opposite table. The non-ruling official becomes or remains the Lead official and administers the free throw(s).
2. "No Long Switches". After fouls not resulting in free throws, the officials switch positions, with the exception of situations such as these:
 - A. When the Lead official rules a PC or TC, he proceeds to the free throw line area, reports the foul to the scorer from there ("Long Report"), and then returns to administer the throw-in (no "Long Switch").
 - B. When the Trail official rules a defensive foul not resulting in free throws, he reports the foul from the reporting area and then returns to the Trail position (no "Long Switch").

Excerpts from the MHSAA Officials' Manual:

3-PERSON SWITCHING AFTER FOULS:

A. General Provisions:

1. When a foul results in one or more free throws, after reporting the foul from within the reporting area, the ruling official will go **opposite table**.
2. The official opposite table replaces the ruling official.
3. The third official remains in the same position.
4. The four corners designating the reporting area are the top point of each free throw circle and points toward the scorer's table half-way to the sideline.
5. If the ruling official was in the Center position opposite table at the time of the foul, that official moves to the reporting area to report the foul, then moves back to the Center position opposite table for the free throw(s).
6. The non-calling officials must assist with identifying the free throw shooter as the ruling official is moving to the reporting area.
7. For detail of the mechanic following fouls not resulting in one or more free throws, see "Fouls, Dead Ball Switching".

E. Dead-Ball Switching:

1. The non-calling officials are responsible for initiating a dead-ball switch while the calling official is proceeding to report the foul.
2. After proceeding to the reporting box to report the foul, the ruling official moves "opposite table" to either Trail or Center, and the official formerly "opposite table" replaces the ruling official.
3. "Long Report, No Long Switch": If a team control foul is ruled by the Lead in the front court and the subsequent throw-in will be administered on the endline opposite the table, he may do a "long report" by pausing briefly after the foul, stepping to a convenient location near the free throw line (allow the players to clear), report to the scorer from there, then return to administer the resulting endline throw-in opposite table as the new Trail.
4. If a team control foul is ruled by the Lead in the front court and the subsequent throw-in will be administered on the endline nearer the table, partners will execute a standard dead-ball switch with the reporting official going opposite table. The ruling official reports the foul from within the reporting area, then moves to the Center position opposite the table. The official opposite the table replaces the calling official as new trail and administers the throw-in.

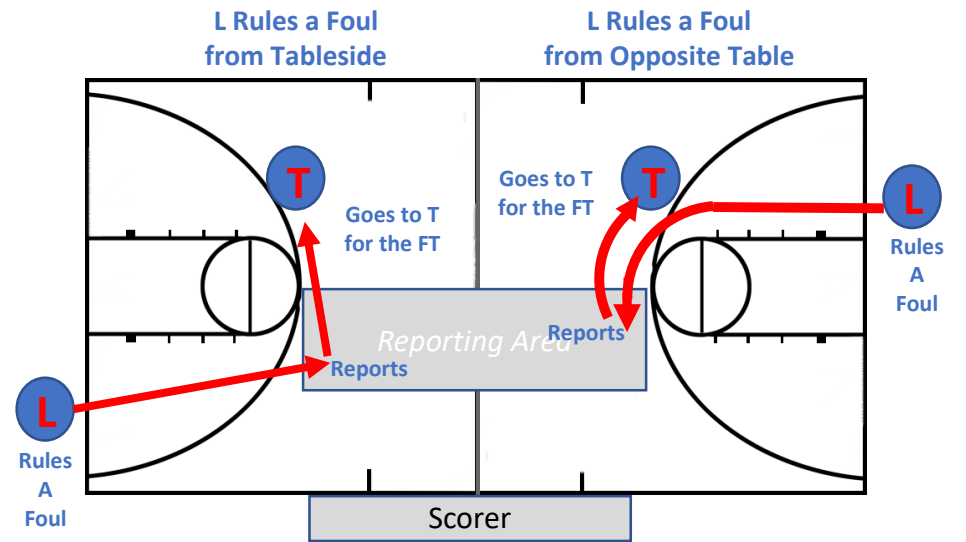
2-Person Foul Reporting

Movements of the Ruling and Reporting Official

After fouls **resulting in free throws**, the ruling official reports the foul from the reporting area and becomes or remains the Trail official opposite table. The non-ruling official becomes or remains the Lead official and administers the free throw(s).



If the Ruling Official Changes Position, the non-Ruling Official Takes His Place (not shown in this illustration)

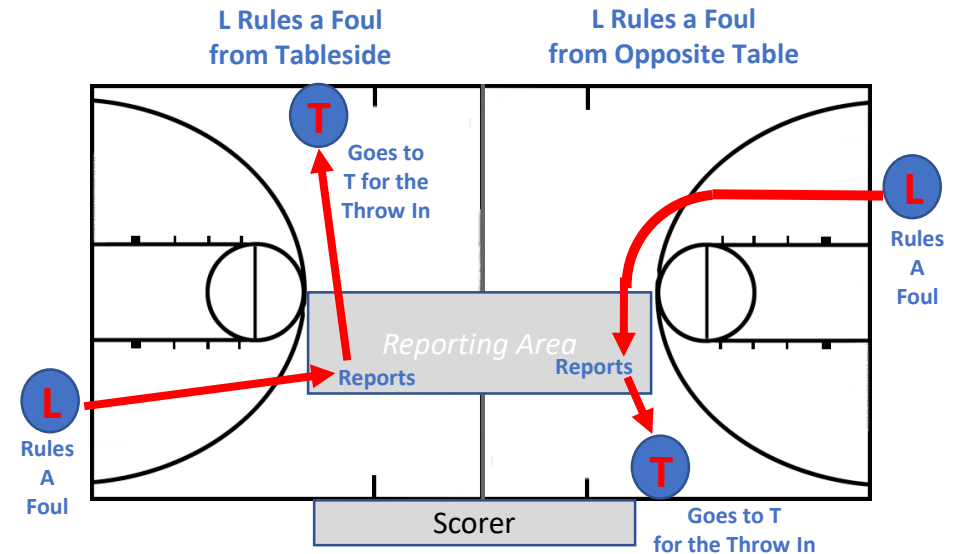


Movements of the Ruling and Reporting Official

After fouls **not resulting in free throws**, the officials switch positions (Exception: “No Long Switches”)



If the Ruling Official Changes Position, the non-Ruling Official Takes His Place (not shown in this illustration)



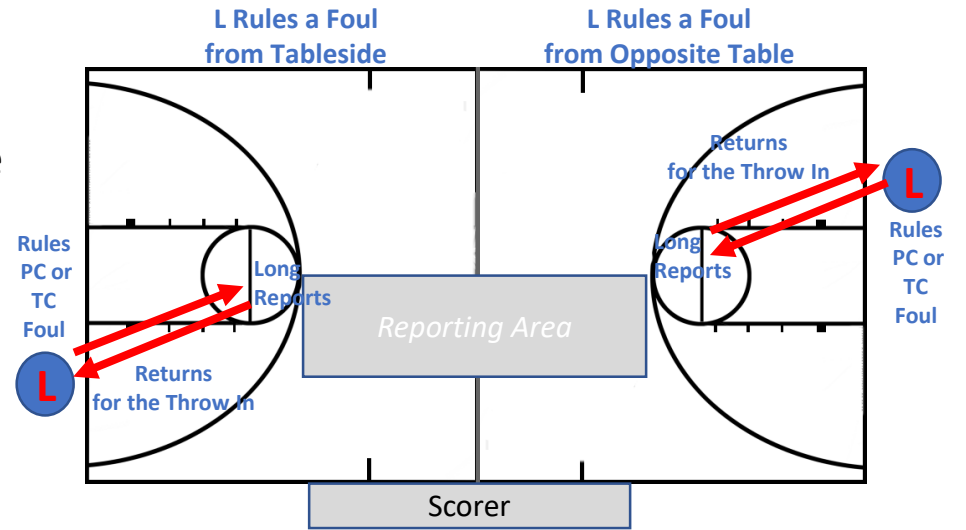
2-Person Foul Reporting

Movements of the Ruling and Reporting Official

When the Lead official rules a PC or TC, he proceeds to the free throw line area, reports the foul to the scorer from there ("Long Report"), and then returns to administer the throw-in (no "Long Switch").



*Non-Ruling Official (not shown in this illustration)
Remains in His Same Position as the Trail*

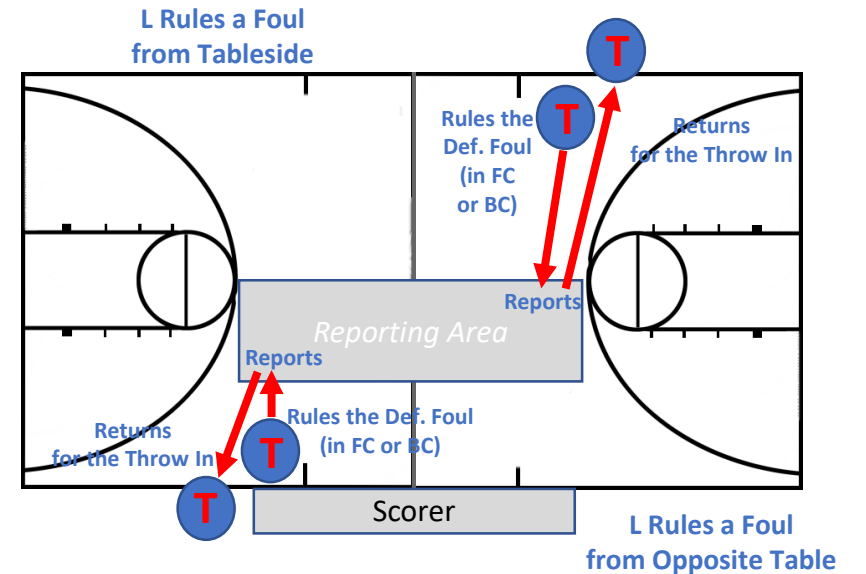


Movements of the Ruling and Reporting Official

When the Trail official rules a defensive foul not resulting in free throws, he reports the foul from the reporting area and then returns to the Trail position (no "Long Switch").



*Non-Ruling Official (not shown in this illustration)
Remains in His Same Position as the Lead*

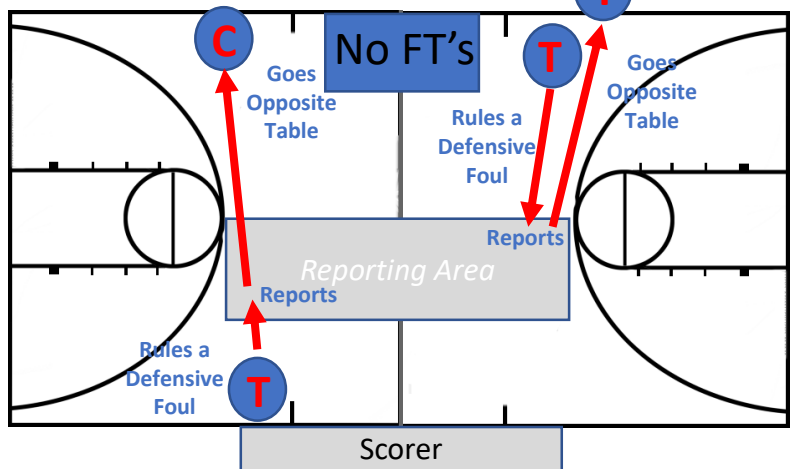
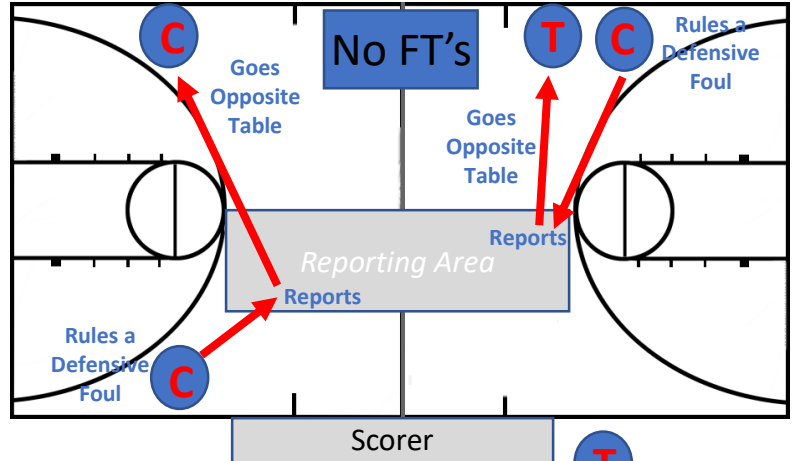
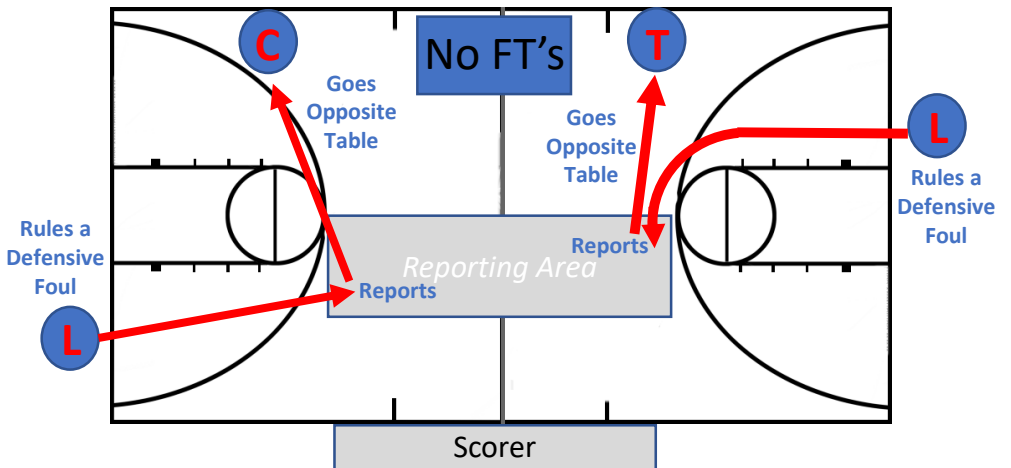


3-Person Foul Reporting

No Free Throws Following Foul

Movements of the Ruling and Reporting Official

After proceeding to the reporting box to report the foul, the ruling official moves “opposite table” to either Trail or Center, and the official formerly “opposite table” replaces the ruling official.

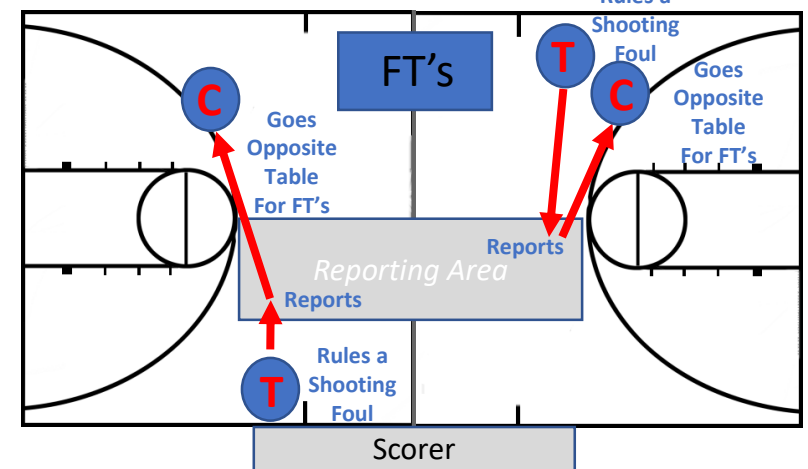
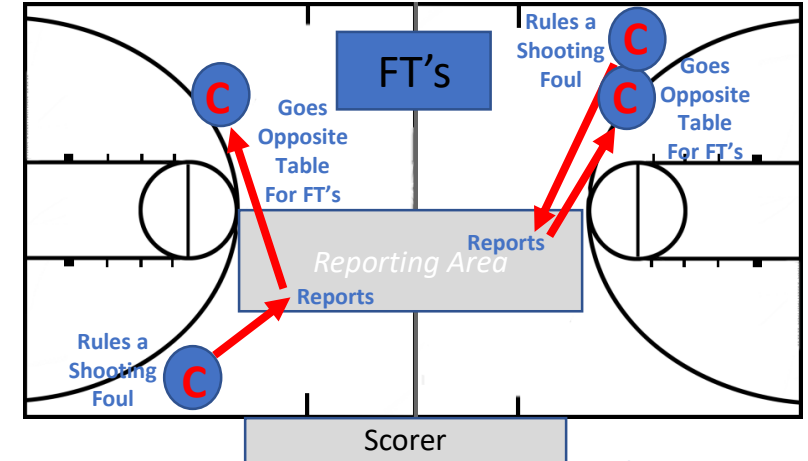
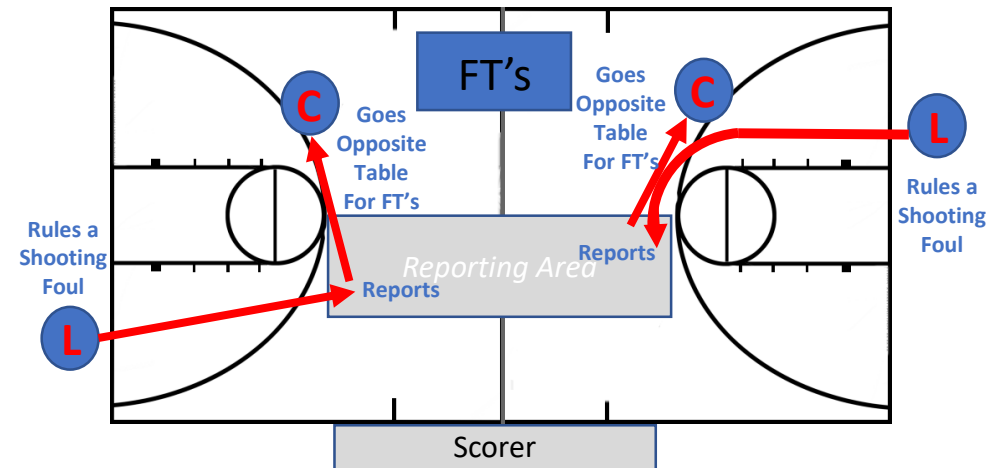


3-Person Foul Reporting

Free Throws Following Foul

Movements of the Ruling and Reporting Official

After proceeding to the reporting box to report the foul, the ruling official moves “opposite table” to either Trail or Center, and the official formerly “opposite table” replaces the ruling official.



3-Person Foul Reporting

“Long Report, No Long Switch”:

Movements of the Ruling and Reporting Official

If a team control foul is ruled by the Lead in the front court and the subsequent throw-in will be administered on the endline opposite the table, he may do a “long report” by pausing briefly after the foul, stepping to a convenient location near the free throw line (allow the players to clear) and administer the resulting endline throw-in opposite table as the new Trail.

If a team control foul is ruled by the Lead in the front court and the subsequent throw-in will be administered on the endline nearer the table, partners will execute a standard dead-ball switch with the reporting official going opposite table. The ruling official reports the foul from within the reporting area, then moves to the Center position opposite the table. The official opposite the table replaces the calling official as new trail and administers the throw-in.

